



Section Section C - Chassis

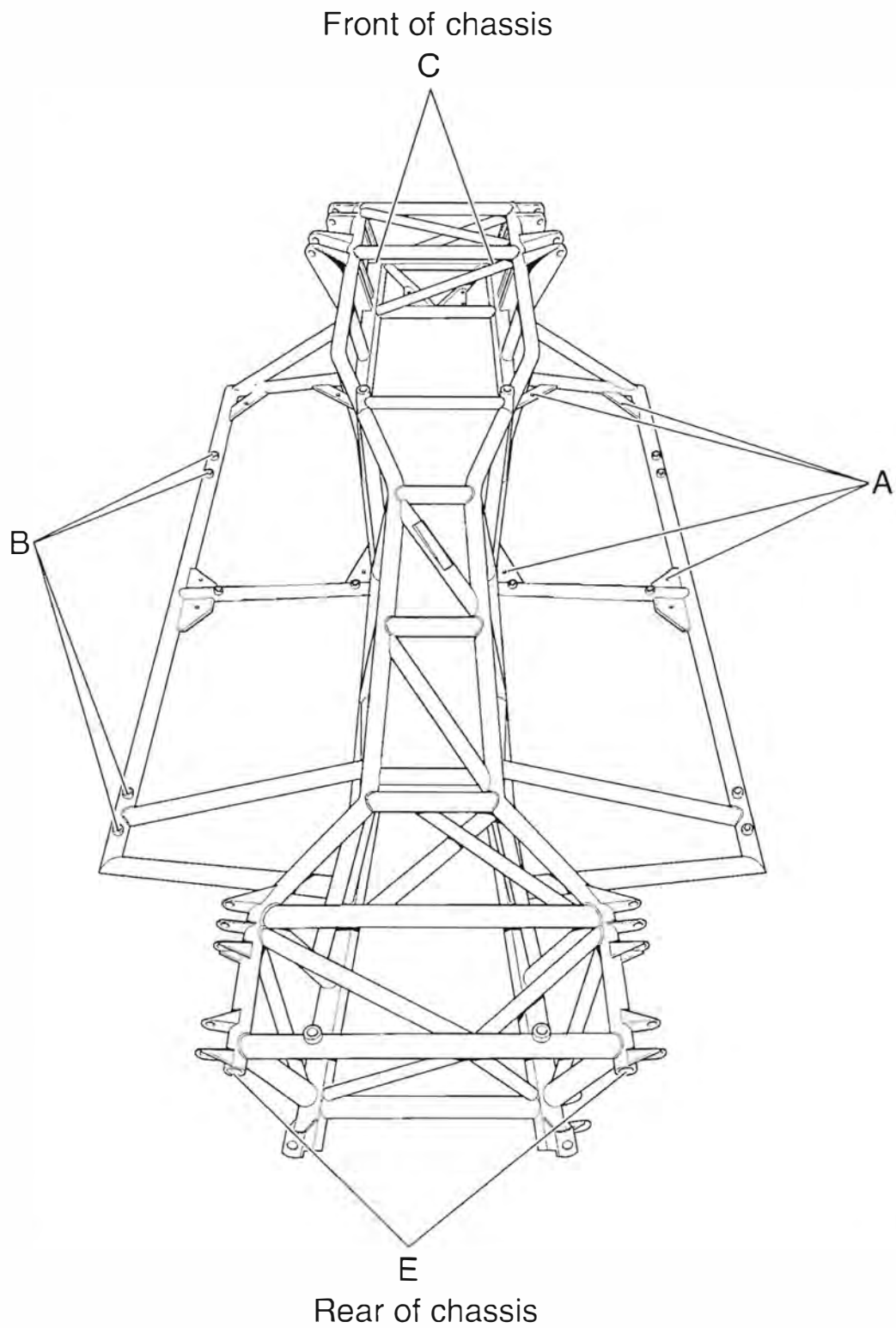
N.B. Chassis part numbers begin with (A)



contents

.....**A**.....

Remove and Replace Body

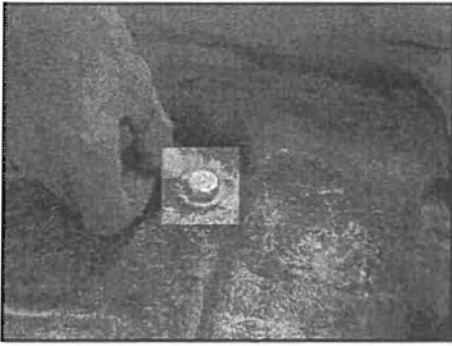




Service / Workshop Manual

Body from Chassis - Removal/Replacement Procedure

Removal/Replacement of Body from Chassis

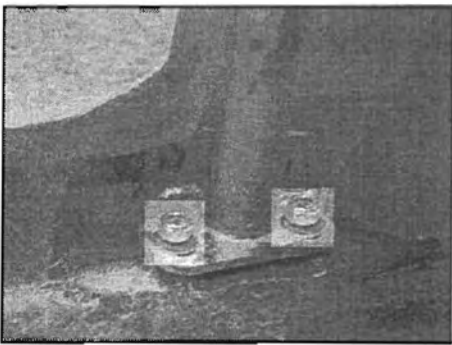


Service/Workshop Manual -Removal of Body

1

Before commencing the operation of replacing a chassis, the main dash, n/s under dash panel, seats, seat belts, and all carpets must be lifted/removed to enable access to the fixing bolts in the floor.

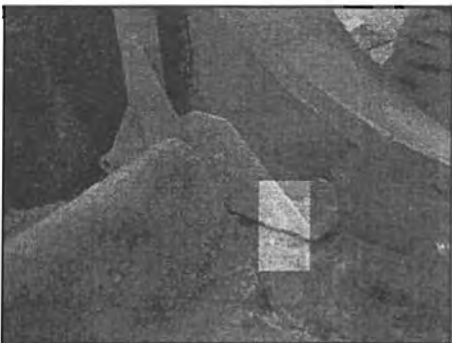
Once this has been done remove the 8 bolts located in the floor pan, 4 of which are located in each foot well.(A) of the illustration at front of section.



Service/Workshop Manual -Removal of Body

2

Next the bolts that hold the roll cage to the chassis need to be removed.(B) of the illustration at front of section. When replacing the bolts care should be taken not to over tighten the bolts & strip the threads.



Service/Workshop Manual -Removal of Body

3

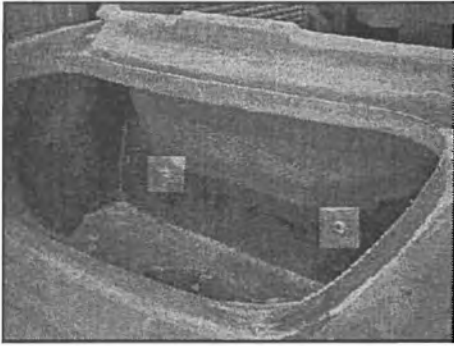
Next the bolts that hold the roll cage to the chassis need to be removed.(B) of the illustration at front of section. When replacing the bolts care should be taken not to over tighten the bolts & strip the threads. Torque to a value of ?



Service/Workshop Manual -Removal of Body

4

At this stage the steering must be disconnected and the engine, radiator, ACon equipment, fuel pump wiring, earth leads - chassis/battery, engine loom, starter lead, reverse light switch, speed sensor wiring must be removed. Guidance for these operations will appear further on in this manual in their relevant sections. Once completed move round to the front of the car and remove the bolts that are located in position (C) of the illustration at front of section.



3

Service/Workshop Manual -Removal of Body

At this stage the boot trim, fuel tank and ECU's must be removed. Then the bolts at the rear can be removed. (D) front of section.



4

Service/Workshop Manual -Removal of Body

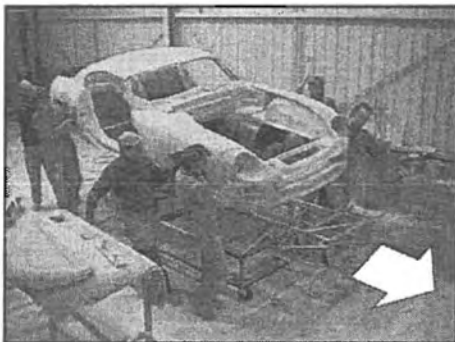
Once all the bolts have been removed the body will lift completely off the chassis.



5

Service/Workshop Manual -Removal of Body

It is recommended that at least eight men are needed to complete this operation - two at each corner as shown.



6

Service/Workshop Manual -Removal of Body

Once the body has been lifted, the chassis, should be pulled out and the body placed gently on the ground.

(Some kind of protection is recommended if the original body is to be reused to prevent damage to the body or paint work.)

To replace the new body reverse the outlined operation ensuring to torque all bolts to their given settings.

contents

.....
A

Bonnet

.....
B

Boot

.....
C

Doors

.....
D

Top Engine Cover

.....
E

Engine Bay cover



Service / Workshop Manual

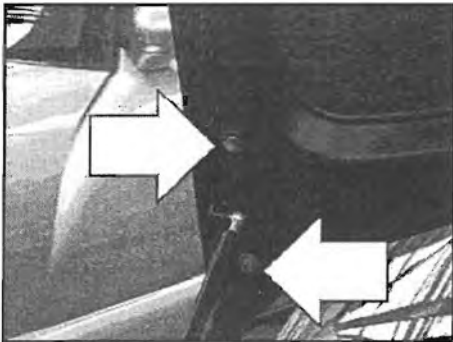
Body Panels - Removal/Replacement Procedure

Boot - Removal/Replacement Procedure



Service/Workshop Manual - Boot Removal

To remove the boot simply unbolt the 4 x M8 bolts with spring and flat washers.



Service/Workshop Manual - Boot Removal

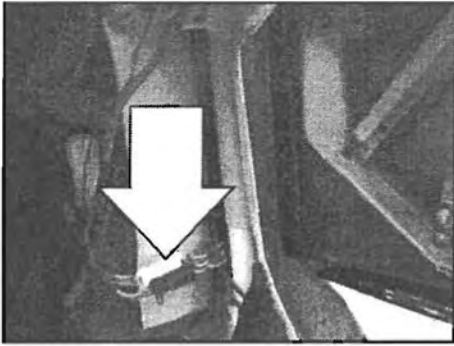
This will release the boot and it can be removed.



Service/Workshop Manual - Boot Removal

To ensure the new boot panel is in the correct position loosely fasten the securing bolts, close the boot and line up the shut lines with the shut lines of the body of the car. Once this has been done the 4 x M8 bolts can be tightened to hold the boot in place. If further adjustment is required the two bolts on each hinge can be loosened and the hinge can be repositioned.

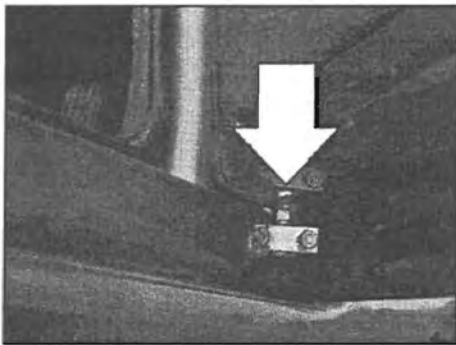
Doors - Removal/Replacement Procedure



Service/Workshop Manual - Door Removal

1

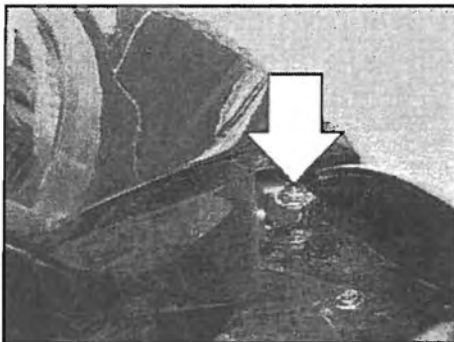
When removing the doors on a Cerbera the first operation is to disconnect the battery (see service section) and all the electronics that are routed through the door for the electric windows and door opening mechanism. The wiring connections are located on the outside of each footwell under the carpet. There should be three connector blocks as shown.



Service/Workshop Manual - Door Removal

2

Once this has been done the bolts, 2 x M8, on the lower door bracket can be removed.

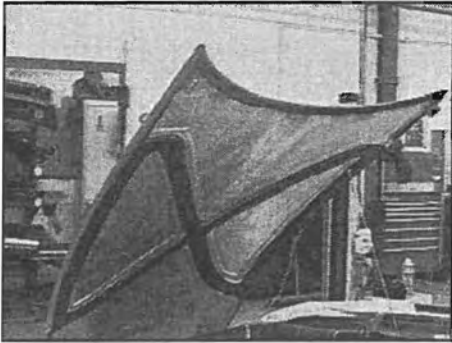


Service/Workshop Manual - Door Removal

3

Finally the M10 nut on the top bracket can be removed. When removing the top securing bolt the door will come free so it is important that somebody is holding the door. N.B. Inside the bracket there is a bush that may fall out whilst completing the operation.

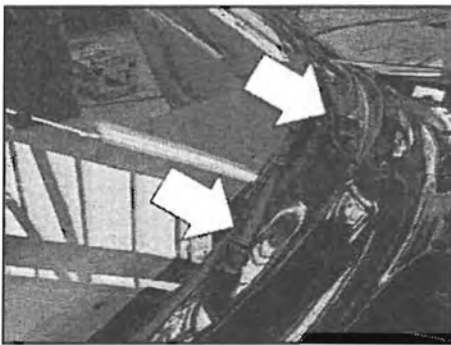
Scoop panel - Removal/Replacement Procedure



Service/Workshop Manual - Scoop panel

1

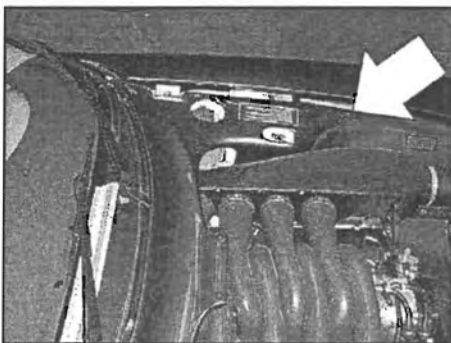
To gain access to the scoop panel, firstly raise the bonnet.



Service/Workshop Manual - Scoop panel

2

Disconnect the washer pipes.

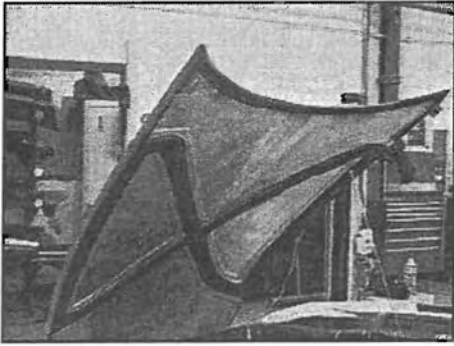


Service/Workshop Manual - Scoop panel

3

Then remove the 2 x M8 allen bolts that secure the panel at each side as shown. To replace the panel, reverse outlined procedure.

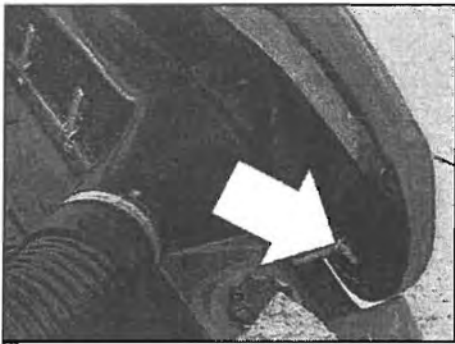
Bonnet - Removal/Replacement Procedure



1

Service/Workshop Manual - Bonnet Removal

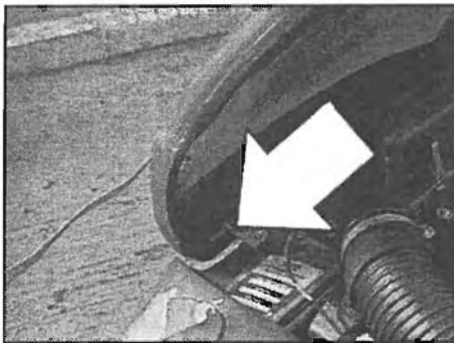
The bonnet is secured to the car at the front, at its hinges. To gain access to the hinge brackets on the front of the bonnet, the bonnet will have to be raised and secured on the bonnet stay clip.



2

Service/Workshop Manual - Bonnet Removal

Loosen the 2 x M8 locking nuts that secure the bonnet to the bracket. Then loosen the bracket securing nuts from inside the body.



3

Service/Workshop Manual - Bonnet Removal

Repeat this operation on the opposite side of the bonnet and this should give enough room for the bonnet to come free from the bonnet bracket.

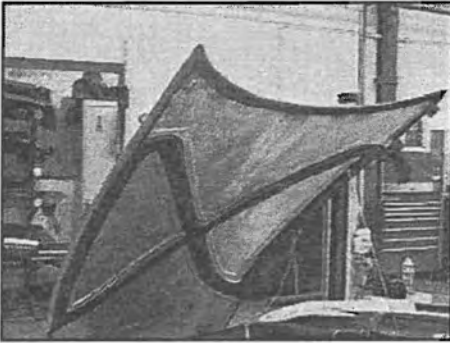


4

Service/Workshop Manual - Bonnet Removal

The bonnet can then be removed. To replace a bonnet reverse the outlined procedure.

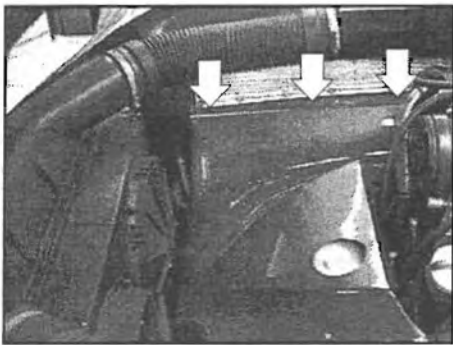
F-1 panel - Removal/Replacement Procedure



Service/Workshop Manual - F-1 panel

1

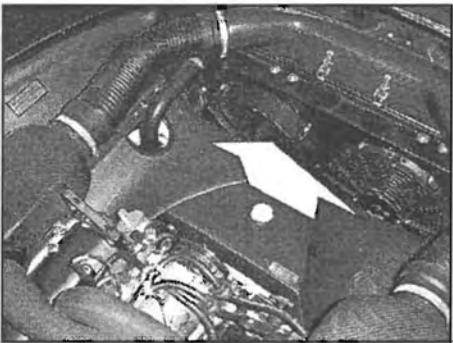
To gain access to the F1 panel, firstly raise the bonnet.



Service/Workshop Manual - F-1 panel

2

The F1 panel is the panel which covers the coolant pipes and chassis and to remove unbolt 6 x M8 allen bolts that secure the panel to the chassis. There are 3 on each side of the panel as shown.



Service/Workshop Manual - F-1 panel

3

Carefully remove.
To replace the panel reverse the outlined procedure.